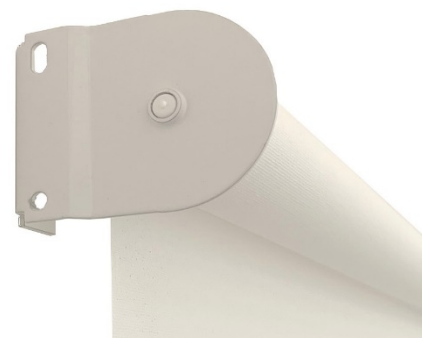
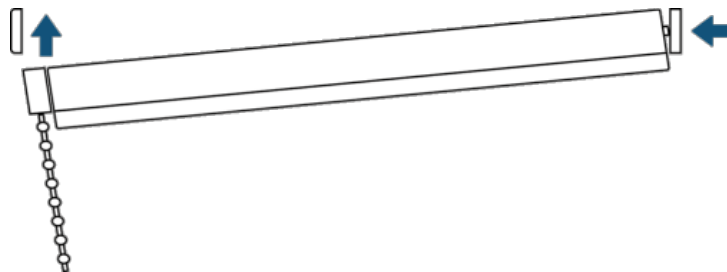


The pull control has been positioned as you requested when ordering. If you need to swap the side that the controls are on, change the roll direction or if you need to further trim the blind, simply unplug the controls from the tube. This should be done before you fix the brackets.



Decide which method of fixing you require, either TOP FIX/ FACE FIX or SIDE FIX. The blind has been supplied with universal fixing brackets to top fix into the ceiling / lintel directly above the blind, face fix onto the wall or window frame directly behind the blind or side fix into a window recess.

Once the brackets have been fitted, insert the blinds pin into the bracket (the pin is located at the opposite end of the blind controls). The control end will then fix into the opposite bracket.



There are two directions for roller blind fabric to immerse from their tube, these are known as 'Standard' or 'Reverse'.

#### STANDARD

---

Standard sends the fabric down via the back of the tube, placing it closest to the window or wall it is mounted on. This method creates less light leakage when the blinds are mounted outside of a recess

---



#### REVERSE

---

Reverse places the fabric at the front of the tube therefore concealing the view of the tube. This method allows extra space for window handles and other obstructions if you mount the blind inside a recess.

---



To alter the roll direction, the fabric must be fully unrolled so that the tube is revealed. Continue turning the tube in the same direction so that the fabric starts to roll up to the opposite side. To get the fabric to sit closer to the tube, run your hands along the fabric to loosely form a fold, and continue rolling the fabric back up.

## CHILD SAFETY

All Roller blinds are come with a 'P' clip to fix to the wall. It must be installed at the maximum distance possible from the control mechanism to prevent looped cords becoming slack.

Ensure the chain is fully taut when placed into position.

Attach the retaining device using suitable fixings ensuring the device is fully closed.

**WARNING:** In the interest of safety, please keep all pull cords and chains out of the reach of children. Move cots, beds and other furniture away from blinds and install safety devices such as cleats and cord tidies to limit access to cords.

---

## FITTINGS

**Universal Brackets**



**Child Safety P Clip**

